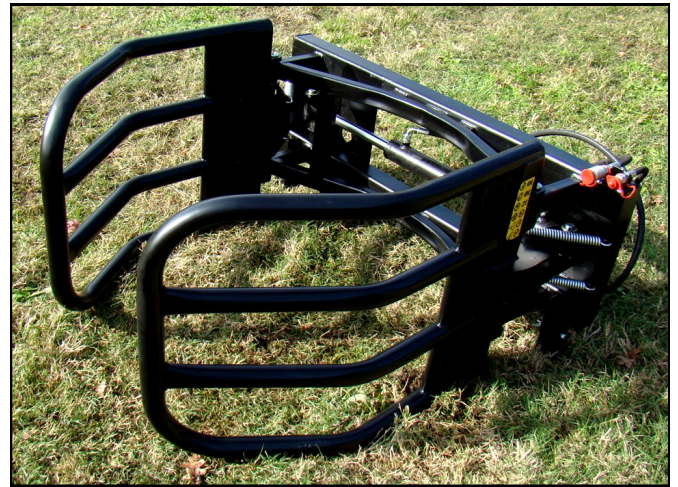


TAR RIVER ATTACHMENTS



PRODUCTS

PALLET FORKS		GRAPPLES	
SCPF	SUB-COMPACT	RG	ROCK
CPF	COMPACT	SBG100	HVY DUTY STUMP BUCKET GRAPPLE
EPF	ECONOMY	SBG200	SRS DUTY STUMP BUCKET GRAPPLE
MPF	MEDIUM	CRG	COMPACT ROOT GRAPPLE
HPF	HEAVY	SDRG100	STD. DUTY—SINGLE TINE ROOT GRPL.
WTHPF	WALKTHROUGH	SDRG200	STD. DUTY—DOUBLE TINE ROOT GRPL.
HYPF	HYDRAULIC	HDRG200	HEAVY DUTY ROOT GRAPPLE
BALE SPEARS		XRG	SERIOUS DUTY ROOT GRAPPLE
TPS	THREE POINT	CLEARING & CUTTING	
EBS	LOADER MOUNT	RR	ROOT RAKE
BS	LOADER MOUNT	TRBC	HEAVY DUTY BRUSH CUTTER
HBS	LOADER MOUNT	XBC	SERIOUS DUTY BRUSH CUTTER
BALE HANDLING		TBS	TREE BOOM
RBG	ROUND BALE GRABBER	TPS	TREE & POST PULLER
SBS	SQUARE BALE GRABBER	TSR	TREE SHEAR
RBU	ROUND BALE UNWINDER	SG	STUMP GRINDER
BUCKETS		SNOW REMOVAL	
RB	ROCK	CSP & SP	SNOW BLADES
LP	LOW PROFILE	XSP	SNOW PUSHER
LB	LONG BOTTOM	MISC.	
CUB	COMPACT UTILITY	QA	QUICK ATTACH PLATE
XMB	MATERIAL	SS & JD	ADAPTER BUCKETS
DB	DISPENSING	BOTB	BOLT-ON TOOTH BARS
4-N-1	HEAVY DUTY 4-N-1	MF	MANURE FORKS
HDB	HI-DUMP	XTM	TRAILER MOVER
SB100	HEAVY DUTY STUMP		
SB200	SERIOUS DUTY STUMP		

PALLET FORK TINES



Model	Size (in.)	
COM-111802 — SCPF, JDSCPF	1 x 3 x 36	2A
COM-111803 — SCPF, JDSCPF	1 x 3 x 42	2A
COM-90222 — CPF, JDCPF	1.18 x 3 x 42	2A
COM-80489 — CPF/JD, EFP/JD, MPF/JD/EG, WTPF	1.38 x 4 x 48	2A
COM-83801 — HPF/JD/EG, WTHPF	1.5 x 4 x 48	2A
COM-87132 — HPF/JD/EG, WTHPF	1.5 x 4 x 60	2A
COM-401830 — OPTIONAL	1.5 x 4 x 72	2A

PALLET FORKS

SUB-COMPACT PALLET FORKS (SCPF SERIES)

- Light, Durable Frame & Forks great for Sub-Compact Tractors
- **SCPF36** = 900 lbs. Lift Capacity - 36" forks
- **SCPF42** = 900 lbs. Lift Capacity - 42" forks
- Standard Universal Skid Steer Mount
- Optional JD Mount Available



COMPACT PALLET FORKS (CPF SERIES)

- Light, Durable Frame & Forks great for Compact Tractors
- **CPF42** = 2,000 lbs. Lift Capacity - 42" forks
- **CPF48** = 3,000 lbs. Lift Capacity - 48" forks
- Standard Universal Skid Steer Mount
- Optional JD Mount Available



MEDIUM & HEAVY DUTY PALLET FORKS

- EPF SERIES** — • 4,200 Lift Capacity
- 48" Forks
 - Standard Universal Skid Steer Mount

- MPF SERIES** — • 4,200 lbs. Lift Capacity
- 42" & 48" Forks Available
 - Walk-Thru Frames Available as **WTPF Series**
 - *Hydraulic Model Available as HYPF Series*
 - Standard Universal Skid Steer Mount
 - Optional JD & Euro/Global Mounts Available

- HPF SERIES** — • 5,200 lbs. Lift Capacity
- 48" & 60" Forks Available
 - Walk-Thru Frames Available as **WTHPF Series**
 - Standard Universal Skid Steer Mount
 - Optional JD & Euro/Global Mounts Available

- WTPF & WTHPF SERIES** —
- **WTPF**— 4,200 lbs. Lift Capacity
 - 42" & 48" Forks Available
 - **WTHPF**— 5,200 lbs. Lift Capacity
 - 48" & 60" Forks Available
 - Standard Universal Skid Steer Mount



BALE SPEARS

3 PT. BALE SPEAR (TPS SERIES)

- Standard 49" Spear
- 2,000 lbs. Capacity
- Category 1 Hitch Pins



LOADER MOUNT BALE SPEARS

- EBS SERIES** —
- Standard Universal Skid Steer Mount Only
 - Single Spear Configuration Only
 - 49" Spear
 - 2,800 lbs. capacity



- BS SERIES** —
- Standard Universal Skid Steer Mount
 - Optional JD & Euro/Global Mounts Available
 - Hi-Back Configurations Available (HBS Series)
 - Single, Double & Triple Spear Configurations Available
 - Standard 49" Spear
 - 3,500 lbs. capacity



- HBS SERIES** —
- Hi-Back Guard (Welded On)
 - Standard Universal Skid Steer Mount
 - Optional JD & Euro/Global Mounts Available
 - Single, Double, and Triple Spear Configurations Available
 - Standard 49" spear — 3,500 lbs. Capacity
 - Optional 39" Spear available upon request



BALE HANDLING

ROUND BALE GRABBERS

RBG Series - For Round Bales (opens 48" - 78")

- Available with 1 or 2 Hyd. Cylinders
- Available in Universal Skid Steer or Euro/Global Mounts
- Circular Design Ensures Strong & Gentle Grip of Bale
- Loader Mount Legs Provide Easy Hook-Up/Disconnect
- Units Come Standard With Hydraulic Hoses - No Couplers



BALE UNWINDER (RBU SERIES)

- Hydraulic Bale Unwinder
- 3 Bale Spears
- 3 point and Universal Skid Steer mount
- 3 Point Euro/Global Mount also Available



BUCKETS

ROCK BUCKET (RB SERIES)

- 3/4" x 6" cutting edge
- 3/8" tines across bottom, 3" apart
- High Quality 1/2" A36 Steel
- Weld-On Teeth Optional
- Heavy, Durable Construction
- Standard Universal Skid Steer Mount
- Optional JD or Euro/Global Mounts
- Available Sizes: 60", 72", 84" & 96"



LOW PROFILE BUCKET (LP SERIES)

- A36 Steel with 3/4" x 6" cutting edge
- 3/16" Wrap & 1/2" Wall
- 21" High x 27.5" Deep
- Weld-On and Bolt-On Teeth Available
- Heavy, Durable Construction
- For units 67 HP and below
- Standard Universal Skid Steer Mount
- Available Sizes: 60", 72", & 84"



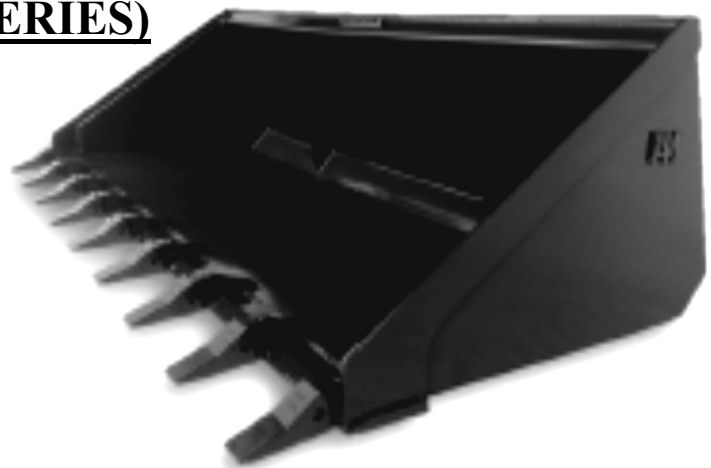
LONG BOTTOM BUCKET (LB SERIES)

- Long bottom, low profile bucket
- A36 Steel with 3/4" x 6" cutting edge
- 3/16" Wrap & 1/2" Wall
- 21" High x 33.5" Deep
- Weld-On and Bolt-On Teeth Available
- Heavy, Durable Construction
- For units 67 HP and Below
- Standard Universal Skid Steer Mount
- Available Sizes: 60", 72", & 84"



BEAST SERIES BUCKET (BB SERIES)

- Heavy Duty Long Bottom, Low Profile Bucket
- 4" x 4" Rectangular Tubing Frame
- A-36 Steel with 3/4" x 6" cutting edge
- 1/4" Wrap & 1/2" Wall
- 1/2" Wear Bars and Side Cutters
- 21 3/4" High x 37.9" Deep
- Weld-On & Bolt-On Teeth Available
- Heavy, Durable Construction
- Standard Universal Skid Steer Mount
- Available Sizes: 78" & 84"



BUCKETS

COMPACT UTILITY BUCKET

- Great For Compact Tractors
- 19" High x 18" Deep
- 4" x 1/2" Cutting Edge
- Heavy, Durable Construction
- For units below 45 HP
- Standard Universal Skid Steer Mount
- Optional JD Mount
- Available Sizes: 48", 60" & 72"



SERIOUS DUTY MATERIAL BUCKET

- Ideal for litter, snow, manure, or other large volume/ lightweight materials (NOT for digging)
- A36 Steel with 3/4" x 6" cutting edge
- 28" High x 36" Deep
- Weld-On & Bolt-On Teeth Available
- Heavy, Durable Construction
- Standard Universal Skid Steer Mount
- Optional JD or Euro/Global Mounts available
- Available Sizes: 80", 90", & 96"



XMB SERIES

DISPENSING BUCKET

- Great for Dispensing Grain, Concrete, Dirt, and/or other Loose Materials
- Holds 1/2" - 3/4" Yards of Material
- 30" Pouring Spout
- 32.5" Deep x 60" Wide x 24.5" High
- Standard Universal Skid Steer Mount

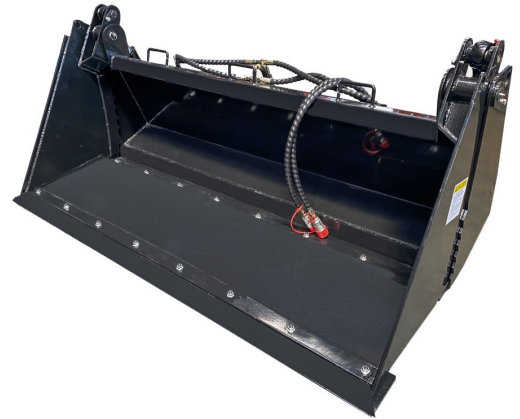
DB SERIES



BUCKETS

4-N-1 BUCKET

- Ideal for dumping, loading, digging, leveling, grappling, clearing snow, and dozing
- Open Distance of 28.3"
- Standard Universal Skid Steer Mount
- Available Width: 75"



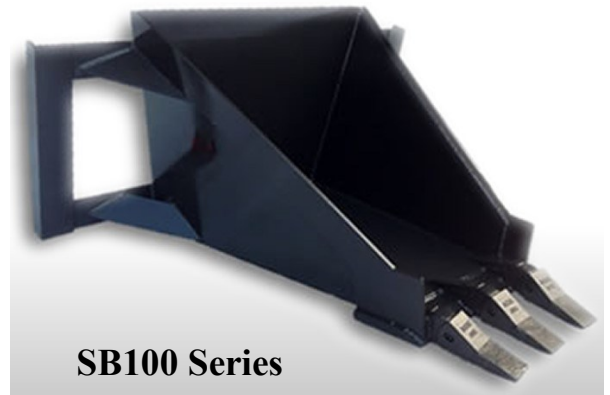
HI-DUMP BUCKET (HDB SERIES)

- Adds 3' of Extra Dumping Height
- Great For Skid Loaders Needing to Reach Over Tall Vertical Mixers
- 2" x 10" Protected Hydraulic Cylinders
- 3/4" x 6" Cutting Edge
- Units Come Standard With Flat Faced Couplers & Hoses
- Standard Universal Skid Steer Mount
- Available Sizes: 72", 84" & 96"



HEAVY DUTY STUMP BUCKET

- Angled toward the front to keep the dirt from "sticking" inside the bucket
- Extra Bracing on the Back and Sides of the Bucket
- 3 Large Pin-On Teeth (Side Pin)
- 28" Wide across the Back
- 14" Wide across the Front
- 33.5" Deep
- 3/4" x 6" Cutting Edge
- Standard Universal Skid Steer Mount
- Optional JD or Euro/Global Mounts



SERIOUS DUTY STUMP BUCKET

- Built from 4" x 4" x 1/4" Square Tubing
- 1/2" High Quality Steel on Sides, Bottom & Back
- 5 ft. 7 inches Deep
- 14" Wide across front
- 20" Wide across back
- 3 large replaceable cast teeth
- Serrated sides to help break loose roots and other debris
- 1" x 8" cutting edge
- Standard Universal Skid Steer Mount
- Optional JD or Euro/Global Mounts



GRAPPLES

ROCK GRAPPLE (RG SERIES)

- 3/4" x 6" cutting edge
- 3/8" tines across bottom and 1/2" sides spaced 3" apart
- 1/2" top tines on grapple
- Twin Cylinders with 2" bore & 10" stroke
- High Quality 1/2" A36 Steel
- 1 1/4" pins w/ counter sunk grease fittings
- Weld-On Teeth Optional
- Units standard w/ flat faced couplers and hoses
- Standard Universal Skid Steer Mount
- Optional JD or Euro/Global Mounts
- Available Sizes: 60", 72", 84" & 96"



STUMP BUCKET GRAPPLES

SGB100 & SGB200 Series

- 4 Large Pin-on Teeth
- 3" x 3" or 4" x 4" Square Tubing
- 3/4" x 6" Cutting Edge and 1" x 8" cutting edge
- 1/2" Gussets all around for added strength
- Protection plates on top and front of grapple
- Grapple opens to 37"
- 1 1/4" Pins and bushings
- Counter-sunk grease fittings
- Units Standard With Flat Faced Couplers & Hoses
- Standard Universal Skid Steer Mount
- Optional JD or Euro/Global Mounts



COMPACT CLAW GRAPPLE

- Heavy Construction—3/8" AR400 Steel
- 2" x 10" Hydraulic Cylinder (Dual)
- Units Standard with Pioneer Couplers & Hoses
- JD Mounts Optional
- 66" Working Width
- SUB-COMPACT TRACTORS ONLY



GRAPPLES

STD. DUTY CLAW GRAPPLE (SDCG SERIES)

- Cylinder has 2 1/2" bore & 8" stroke
- Units Come Standard With Pioneer Couplers & Hoses
- Universal Skid Steer Mount
- Dual Cylinders
- 60", 66" & 72" Working Widths



SHOWN: SDCG72

COMPACT ROOT GRAPPLE (CRG SERIES)

- Specifically Designed for Compact Tractors (Under 40 HP)
- Made with 3/8" Steel and 3"x3" Tubing
- 9" Spacing Tine Spacing—30 3/4" Deep & 13.5" High (closed)
- 34" Maximum Height Opening
- Double Tine Grapple with 2"x8" Cylinders (@ 3,000 PSI)
- Standard Universal Skid Steer Mount
- Optional JD or Euro/Global Mounts
- Available Sizes: 48" 60" & 72"



STANDARD DUTY ROOT GRAPPLE

SDRG100 & SDRG200 SERIES

- High Quality 3/8" A36 Steel Plates with 3"x3" tubing & 1/4" Wall
- 9" Tine Spacing - Grapple Opens 34" - 38 3/4" Depth
- SDRG100 Single Tine - SDRG200 Double Tine
- 1 1/4" Pins with Counter Sunk Grease Fittings
- Grapple Opens 35"
- Standard Universal Skid Steer Mount
- Optional JD or Euro/Global Mounts
- Available Sizes: 60", 66" & 72"

SHOWN: SDRG200 SERIES



HEAVY DUTY ROOT GRAPPLE (HDRG200 SERIES)

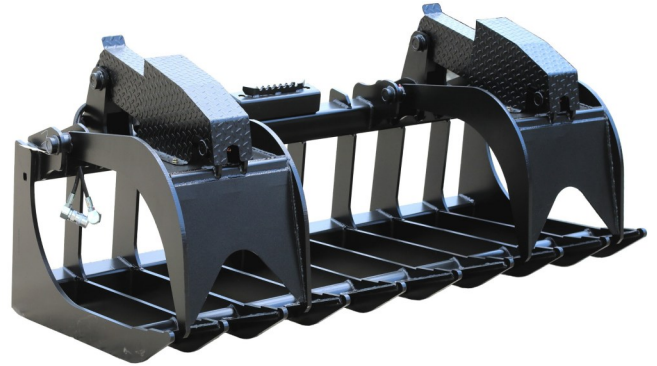
- High Quality 3/8" A36 Steel Plates with 4"x4" tubing & 1/4" Wall
- Double Grapples with 2" x 10" Working Cylinders
- 1 1/4" Pins with Counter Sunk Grease Fittings
- 9" Tine Spacing - Grapple Opens 34" - 39 1/2" Depth
- Standard Universal Skid Steer Mount
- Optional JD or Euro/Global Mounts
- Available Sizes 60", 72" & 84"



GRAPPLES

SERIOUS DUTY ROOT GRAPPLE (XRG SERIES)

- High Quality 1/2" A36 Steel Tines
- Twin Covered Cylinders Work Independently
- Counter Sunk Grease Fitting
- 4"x4" Square Tubing with 1/4" Wall
- Tines Open 34"
- Standard Universal Skid Steer Mount
- Optional JD or Euro/Global Mounts
- Available Sizes: 72", 78", 84" & 96"



GRAPPLE BUCKET (HDGB SERIES)

- Heavy Duty Construction - 1/4" A-36 Steel
- Cylinders have 2" bore & 10" stroke
- Heavy Duty Cylinder Covers
- 1 1/4" pins with counter sunk grease fittings and bushings
- Weld-On & Bolt-On Teeth Available
- Units Come Standard With Flat Faced Couplers & Hoses
- Standard Universal Skid Steer Mount
- Optional JD or Euro/Global Mounts
- Available Sizes: 60", 72", 84" & 96"



BRUSH GRAPPLE (HDBG SERIES)

- Heavy Duty Construction - 1/2" A-36 Steel
- Cylinders have 2" bore & 10" stroke
- Opens 42" to grab big material and closes tight
- 1 1/4" pins with counter sunk grease fittings and bushings
- Gussets on front tips for extra protection
- 3" x 3" x 1/4" Heavy Duty tubing
- Units Come Standard With Flat Faced Couplers & Hoses
- Standard Universal Skid Steer Mount
- Optional JD or Euro/Global Mounts
- Available Sizes: 60", 72", 84" & 96"



FORK GRAPPLE (HFG SERIES)

- Grapple consists of 2" bore and 10" stroke cylinder
- Units Come Standard With Flat Faced Couplers & Hoses
- 48" Forks with 4,200 lbs. capacity
- Standard Universal Skid Steer Mount
- Optional JD or Euro/Global Mounts



CLEARING & CUTTING

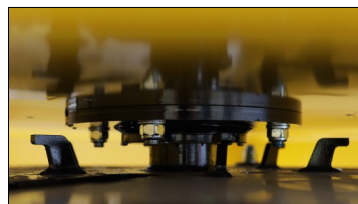
ROOT RAKE (RR SERIES)

- High Quality 1/2" A36 Steel
- Great for Separating Debris and Roots from Top-Soil
- Heavy, Durable Construction
- Standard Universal Skid Steer Mount
- Optional JD or Euro/Global Mounts
- Available Sizes: 60", 72" & 84"



HEAVY DUTY BRUSH CUTTER (TRBC SERIES)

- Low-Flow Cutter (14/23)
- Open-Faced, Heavy Duty Deck made with 1/4" A36 Steel
- 5" Cutting Capacity
- Hydraulic Direct Drives & Internal Relief Valve
- 3 Cutting Blades (60SiMn steel)
- Units Come Standard With Flat Faced Couplers & Hoses
- Standard Universal Skid Steer Mount
- Available Sizes: 60" & 70"



Low profile blade assembly with Anti-wrapping rotor protection gives superior strength than with traditional designs

RECOMMENDED: FLOW 14-20 GPM DO NOT EXCEED 23 GPM

CLEARING & CUTTING

SERIOUS. DUTY BRUSH CUTTER (XBC SERIES)

- Low-Flow Cutter (16/25)
- Open Faced, Heavy Duty Deck made with 1/4" A36 Steel
- 6" Cutting Capacity
- Hydraulic Direct Drives & Internal Relief Valve
- Bi-Directional Cutting
- Extreme Blade Pan That is Extra Large To Maintain Force & Momentum
- 2 Cutting Blades (AR-500)
- Units Come Standard With Flat Faced Couplers & Hoses
- Standard Universal Skid Steer Mount
- Optional JD or Euro/Global Mounts
- Available Sizes: 60" & 72"



TREE & POST PULLER (TP SERIES)

- Pulls trees or posts up to 8" in diameter
- Heavy-Built for tough jobs
- Units Come Standard With Flat Faced Couplers & Hoses
- Standard Universal Skid Steer Mount
- Optional JD or Euro/Global Mounts



TREE SHEAR (TSR & TRN SERIES)

- Cut trees and logs up to 12" in diameter
- 1" AR400 cutting blade
- Built with 5" bore x 12" stroke cylinder with up to 30 tons of shear force
- 90 degree rotation
- Units Come Standard With Flat Faced Couplers & Hoses
- Standard Universal Skid Steer Mount
- Optional JD or Euro/Global Mounts
- Available in Rotating (TSR1250) or Non-Rotating (TRN1200)

TSR SERIES



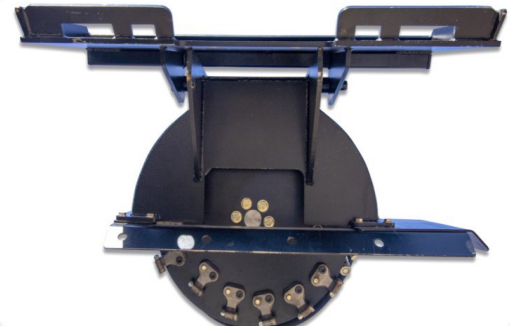
TRN SERIES



FOR STUMPS & SNOW

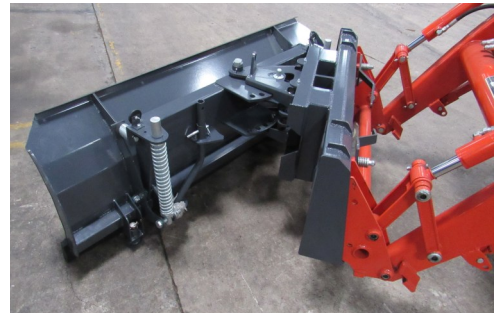
STUMP GRINDER

- Units Come Standard With Flat Faced Couplers & Hoses
- Standard Universal Skid Steer Mount
- 200 Series GPM 16-25 - 300 series GPM 21-30
- 26" wheel with 15 teeth "Green Teeth"



COMPACT SNOW BLADE (CSP SERIES)

- Standard Universal Skid Steer Mount
- Reversible & Replaceable Rubber Edge
- Hydraulic Angle Left or Right
- Spring Loaded & Automatic Trip
- Available Sizes: 60", 72", 84" & 96"



SERIOUS. DUTY SNOW BLADE (SP SERIES)

- Reversible & Replaceable 8" x 1/2" Steel Cutting Edge
- Optional Rubber Edge - 6" x 1" (reversible)
- Adjustable Blade Height
- Hydraulic Angle Left or Right - 2" x 8" tie-rod cylinder
- Spring Loaded & Automatic Trip
- 3" x 3" x 1/4" solid backing across blade for protection and durability
- 5 1/2" thick back braces
- Standard Universal Skid Steer Mount
- Optional JD or Euro/Global Mounts
- Available Sizes: 72", 84", 96" & 108"



SERIOUS. DUTY SNOW PUSHER (XSP SERIES)

- Serious Duty Construction makes this a great tool for Snow as well as Manure, etc.
- Rubber Edges come standard
- Available Sizes: 84", 96" & 120"
- Standard Universal Skid Steer Mount
- Optional JD or Euro/Global Mounts



MISCELLANEOUS

QUICK ATTACH PLATES

- Weld-On Universal Skid Steer Plates
- Available in 3 Thicknesses:
 - Standard Duty - 1/4"
 - Heavy Duty - 3/8"
 - Serious Duty - 1/2"



ADAPTER BRACKETS

- EG2SS—Adapts Euro/Global loader mounts to Universal Skid Steer mount
- JD2SS—Adapts JD loader mounts to universal Skid Steer mount
- BA2SS—Blank Adapter to universal skid steer



BOLT-ON TOOTH BARS

- Convert a Smooth Edge Bucket into a Tooth Bucket
- Achieve Better Digging Power
- 1/2" x 4" Cutting Edge
- Large Pin-On Teeth (Side Pin)
- 2 Pieces of 3" Square 3/8" Thick, Pre-Drilled Steel Comes with Every Tooth Bar
- Various Size Available Upon Request - Priced Per Foot, Round Up to Nearest Foot



TRAILER MOVER

- Great For Moving Gooseneck or Tow-Behind Trailers
- Standard Universal Skid Steer Mount



MANURE FORKS

- Replaceable Tines
- Standard Universal Skid Steer Mount
- Optional JD or Euro/Global Mounts



Web: TarRiverMFG.com
Email: Sales@TarRiverMFG.com
Info@TarRiverMFG.com

DISTRIBUTED BY: **BELC** 
RESOURCES
EQUIPMENT

401 Jeffreys Road
Rocky Mount, NC 27804
Tel: (252) 822-7140
Web: www.BR-Equipment.com
Email: Sales@BR-Equipment.com